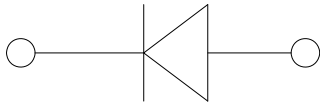
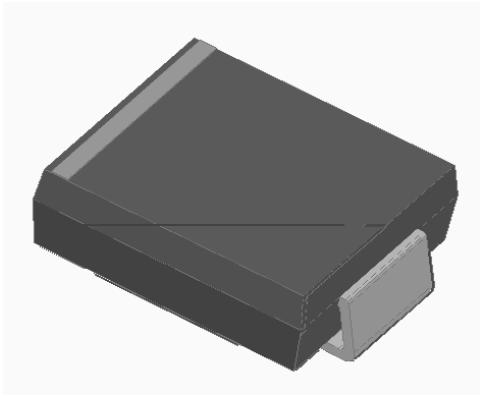


SS82Q THRU SS84Q

RoHS
COMPLIANT



Typical Applications

RU XVH LQ ORZ YRQWQBHLQYUJHJZKH HOLQJ
'&' & FRQYHUWHUM DQGV RQDWLW\ SURWHFV
DSSOLFDWLRQV

Mechanical Data

" Package '2 \$% 60&
0ROGLQJ FRPSR/QG PHHWDPPDELOLW\
UDWLQJ 5R+6 FRPSOLDQW
" Terminals 7LQ SODWHG OHDGV VROGHUDEOH S
- 67' DQG -(6' %
Polarity: &RORU EDQG GHQRWHV WKH FDWKRGH

vMaximum Ratings 7D 8QOHVV RWKHUZZLVH VSHFLILHG

PARAMETER	SYMBOL	UNIT	SS82Q	SS84Q
'HYLFH PDUNLQJ FRGH			66	66
5HSHWLWLYH SHDN UHYHUVH YROWDJH			9	
0D[LPXP 506 YROWDJH	9 ₅₀₆		9	
0D[LPXP '& EORFNLQJ YROWDJH	9 _{&}		9	
0D[LPXP DYHUDJH IRUZDUG UHEWLILHG FXUUHQW DW 7 \$				
6XUJH QRQ UHSHWLWLYH IRUZDUG FXUUHQW \$ # +] KDOI VLQH ZDYH - F\FOH 7				
9ROWDJH UDWH RI ₅ FKDQJH UDWHG 69 GW		9 V		
6WRUDJH WHPSHUDWXUH	7 _{vWJ}	-		a
-XQFWLRQ WHPSHUDWXUH	7 _.	-		a

vElectrical Characteristics 7D 8QOHVV RWKHUZZLVH VSHFLILHG

PARAMETER	SYMBOL	UNIT	SS82Q	SS84Q
Forward Current	I _F 18A	T ₁₂ }		9
		7. -		
Reverse Current	I _R 5DWHG 9	7. -		\$
		7. -		P\$
Reverse Leakage Current	I _{RL} 5 9 & 0+]		9	S)

v7KHUPDO & KDUDFWHUBQWH/W RWKHUZLVH VSHFLILHG

3\$5\$0(7(5		6<0%2/	81,7	66 4	66 4
7KHUPDO	%HWZHHQ MXQFWLRQ	DQG DPELHQW	-		
5HVLVWDQFH	%HWZHHQ MXQFWLRQ	DQG OHDG			

1RWH

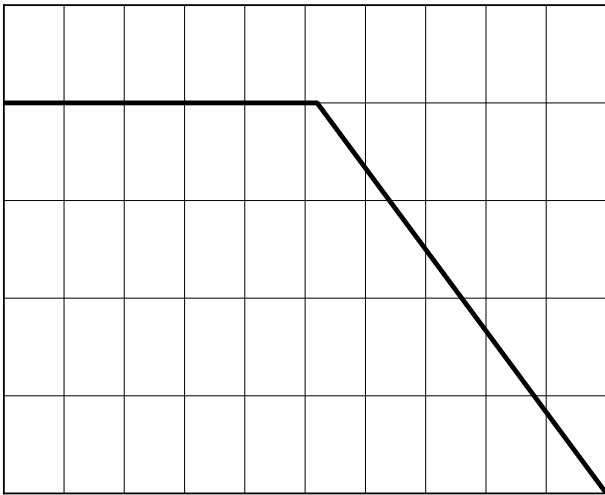
7KHUPDO UHVLVWDQFH DPELHQW FOLQORRG GRFXOWRG WQ 3 & % ZLWK [U SDG DUHDV PP

v2UGHULQJ , QIRUPDVLHQ

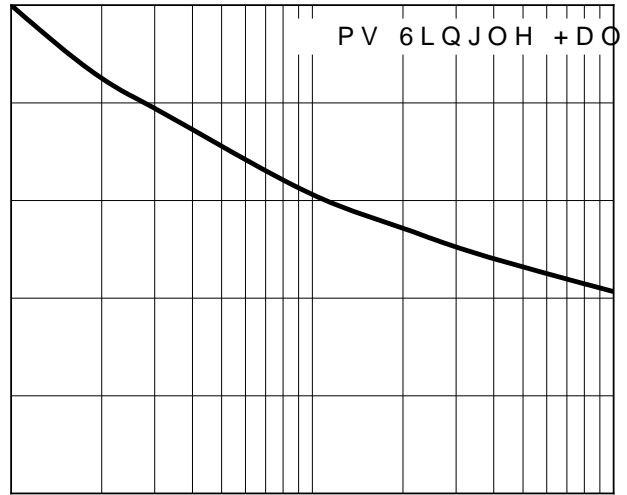
35()(5(' 3 1	3\$&.\$*(&2'()	81,7 :(*,+7 J	0,1,080 3\$&.\$*(SFV	287(5 &\$5721 48\$17,7< SFV	'(/,9(5< 02'()
66 4a66 4)	\$SSUR[LPDW			

v & KDUDFWHUBSLWDFV

)LJ)RUZDUG & XUHQW 'HUDWLRQJ) & XUYD[LXP 1RQ 5HSHWLWLYH 3HDM

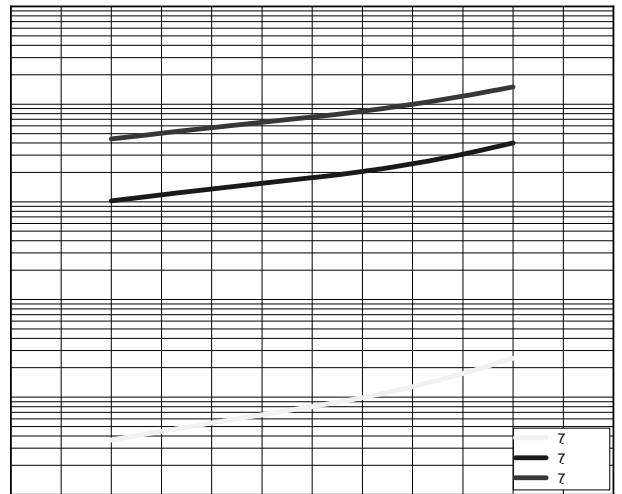
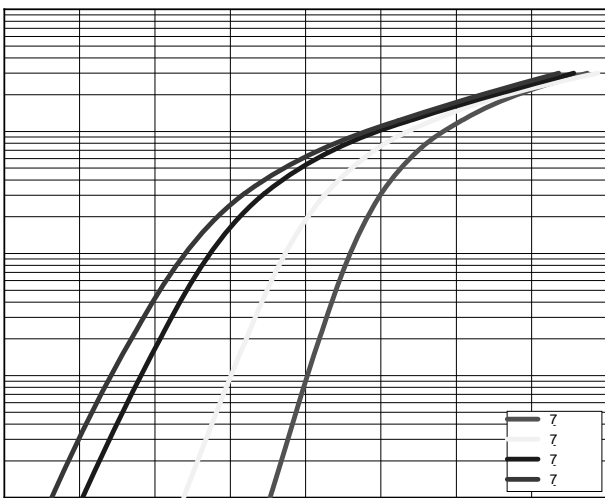


/HDG 7HPSHUDWXUH



1XPEHU\RD&V DW +]

)LJ 7\SLFDO ,QVWDQWDQHRXV)RUZDUG & KDUDFWHUBSLWDFVHYHUVH /HDNDJH

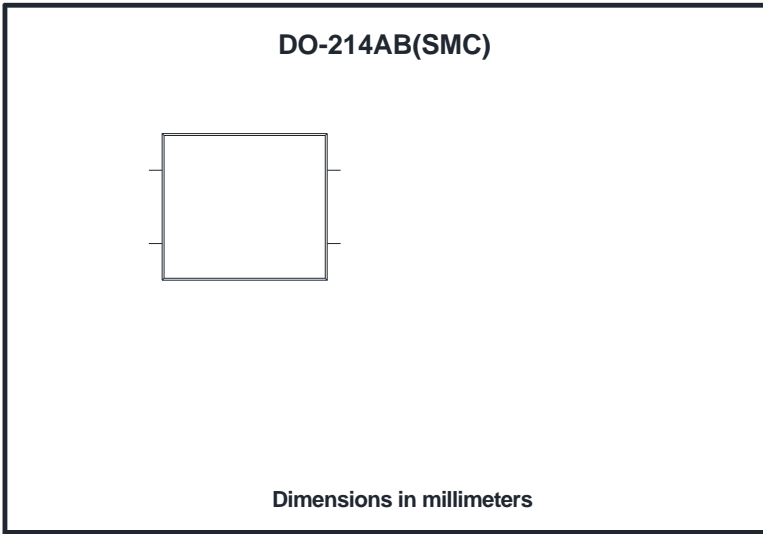


,QVWDQWDQHRXV)RUZDUG 9ROWDJH 9 3HUFHQW RI 5DWHG 3HDN 5HYH



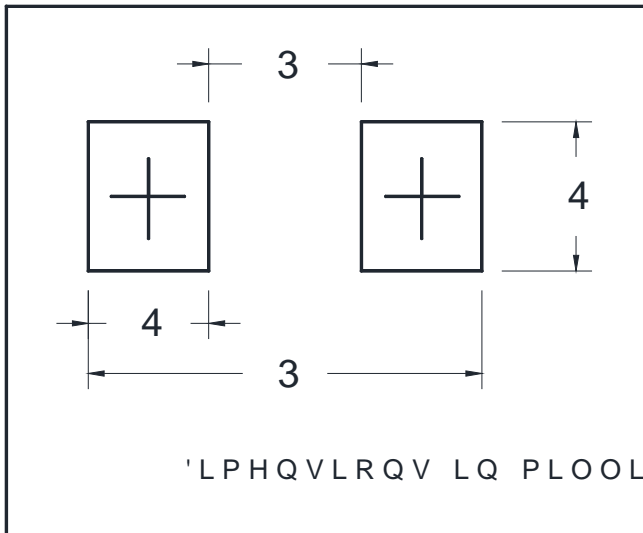
SS82Q THRU SS84Q

vOutline Dimensions



'2	\$%	60&
'LP	0LQ	0D[
\$		
%		
&		
'		
(
)		
*		
+		

Suggested pad layout



'2	\$%	60&
'LP	0LQ	
3		
3		
4		
4		



SS82Q THRU SS84Q

Disclaimer

7KH LQIRUPDWLRQ SGRFWRUHQW LQ IRU KLW DQJH KRXK BQQMLH (OHFWURQLF 7HFKQRO
ULJKW WR PDNH FKDLFH VRZL WKR XWS KRLS IURDG XIFRQ/ RGLWSOD\HG KHUHLQ WURGLFVSLWRQ
RU RWKHUZLVH

7KH SURGXFWOOLVGHG\KJLHGL WR EH MHHGHZWWUR QXFWR DUMXORWL GHPHG QFHOD IROXIH
DLQLQJ RU <DQJMLH URU WQ\ RQKDRQ LDV\XSPRQVQ ELOLW\ RU OLDELOLW\ IRULDSURSDP
HU XVH RI VDOH

7KLV SXEOLFDWLRQ SVXDSFHUW DGDVLQURQ\PDVSLRQLSGHYRUR XDGGLWLRQDO LQWRHUPDWLR
KWW [WZZ](#) \DQJMLHRFRFRPRQVXOW \RXU QHDUHW <DQJMLH\WQVFOHV RILFH IRU IXUW